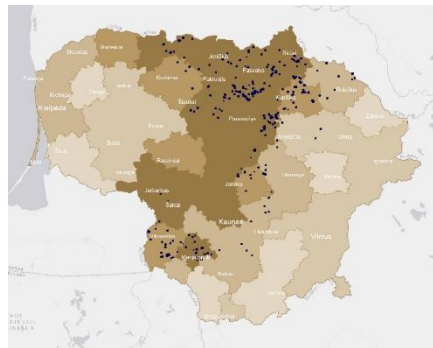


INVL Baltic Farmland, AB was established on 29 April 2014 on the basis of a part of assets split-off from Invalda INVL, one of the leading asset management groups in the Baltic region.

INVL Baltic Farmland manages shares of companies investing into agricultural land. INVL Baltic Farmland has 100% in 18 companies owning more than 3 thousand hectares of agricultural land in Lithuania.

On 30 June 2015 the company has signed an agreement with INVL Farmland Management regarding administration of assets.

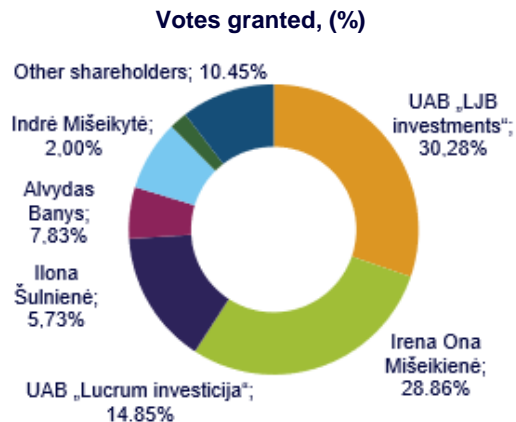


The land plots which the company owns are in the most productive regions of Lithuania. They're indicated in blue.

**INL1L** Shares of INVL Baltic Farmland are listed on Nasdaq Vilnius stock exchange Secondary list since 4 June 2014.  
Nasdaq Baltic Listed

### Main characteristics of INVL Baltic Farmland shares admitted to trading

Shares issued, units	3,291,549
Total voting rights granted by the issued shares, units	3,228,510
Nominal value for one share, EUR	0.29
Total nominal value, EUR	954,549.21
ISIN code	LT0000128753



### Management of INVL Baltic Farmland

#### The Board (term of office 2018-2022)

Alvydas Banys (Chairman)

Indrė Mišeikytė

Darius Šulnis

CEO

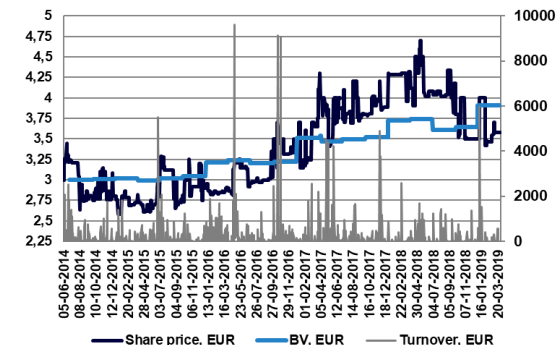
Eglė Surplienė

Key figures	31-03-2017	31-03-2018	31-03-2019
Book value of land, EUR thousand	12,335	12,964	13,878
Cash, EUR thousand	451	410	433
Other assets, EUR thousand	392	553	502
Consolidated equity, EUR thousand	11,199	12,073	12,352
Deferred income tax liabilities, EUR thousand	1,125	1,238	1,383
Deferred revenue, EUR thousand	403	421	453
Other liabilities, EUR thousand	451	195	625
Controlled cultivated cropland area, thousand ha	3	3	3
Average rental income per hectare, EUR	179	187	202
Book value of one share (BV), EUR*	3.47	3.74	3.83
Dividend yield, %*	1.6	3.5	2.8
<b>Profit (loss), EUR thousand</b>	<b>01.01.2017-31.03.2017</b>	<b>01.01.2018-31.03.2018</b>	<b>01.01.2019-31.03.2019</b>
Revenue	134	140	151
(Allowance for) reversal of impairment of trade receivables	(2)	(18)	(49)
Profit before tax	96	87	62
Net profit	82	71	45

\*Indicator formulas of INVL Baltic Farmland

(<https://invlbalticfarmland.com/lit/en/investor-relations/reports/indicator-formulas>)

### Historical relation between share price and BV\*, %



Share price Premium/ discount vs BV*, %	
31 March 2017	21.5
30 June 2017	11.2
30 September 2017	7.95
31 December 2017	4.57
31 March 2018	15.5
30 June 2018	13.0
30 September 2018	4.4
31 December 2018	(0.1)
31 March 2019	(6.4)